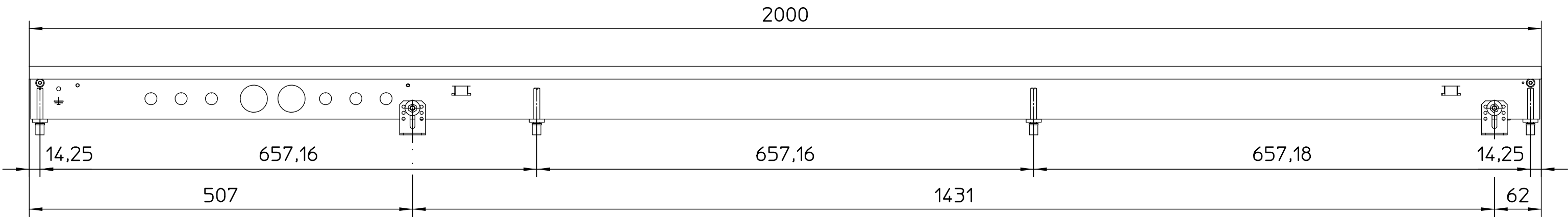
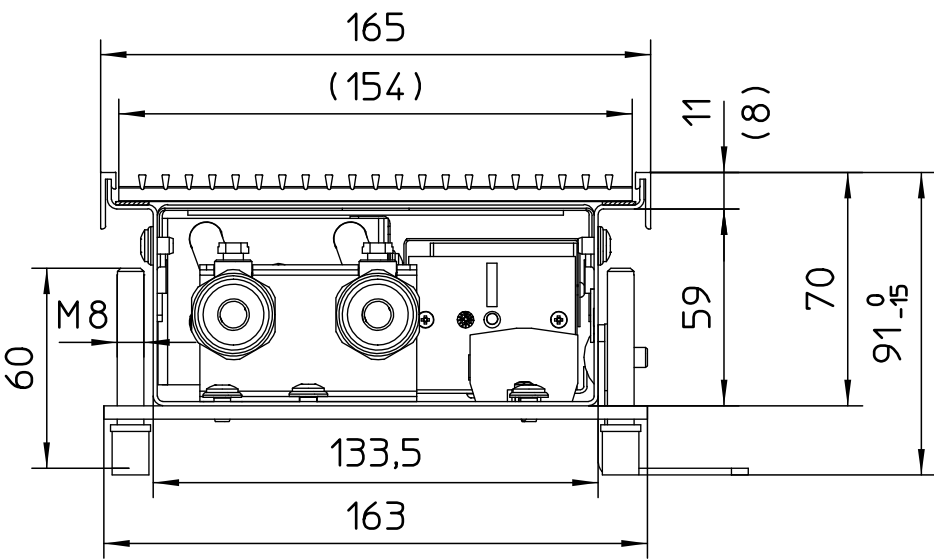


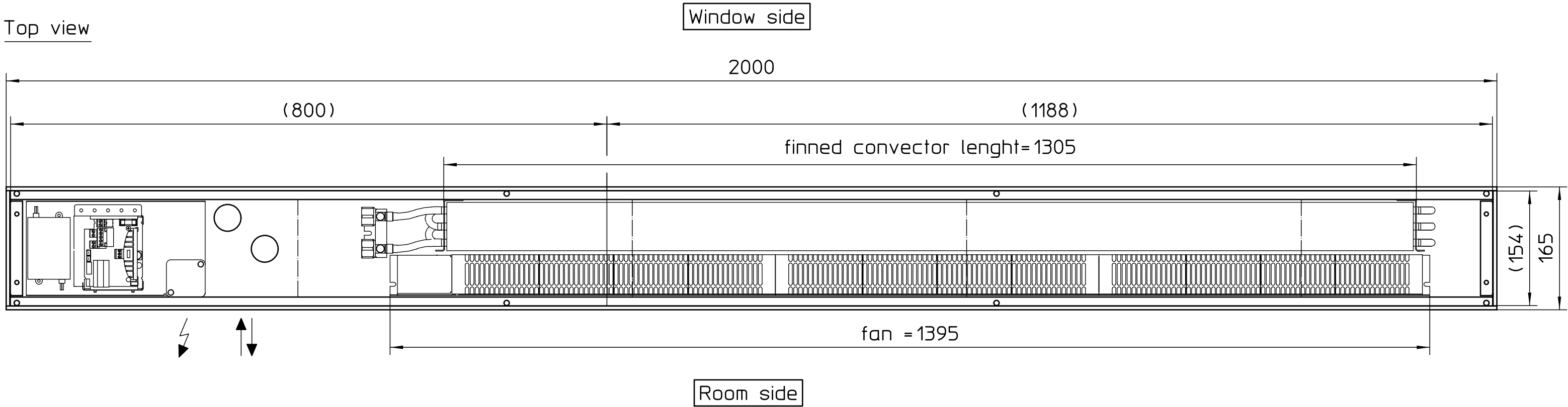
Front view



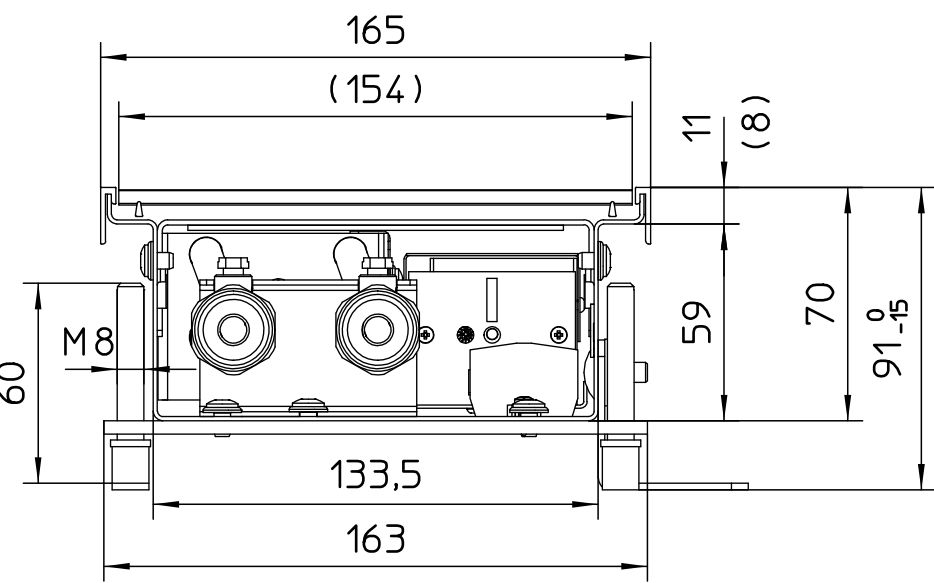
Cross section  
with linear-grille



Top view



Cross section  
with orthogonal-grille



IMPORTANT:

Height to be checked on site!

- ↕ Holes for water connections
- ⚡ Electric connection/Cable inlet


Dimensions = Overall frame dimensions  
Dimensions in brackets = Grill dimensions

Drawing approved for manufacture ☐  
Dimensions have been changed ☐

Date \_\_\_\_\_ Stamp/Signature \_\_\_\_\_

1/2" female BSP

Please mark:  
Type linear-grille ☐  
Type orthogonal-grille ☐

Anzahl								
Stammteil-Nr.		 49794 Lingen Tel. 0591-7108-0	Index	Änderung		Name		Datum
Stamm-Nr.	Folge-Nr.							
Projekt-Nr.	Erst. 06.12.16 jterfehr		Format	Art-Gr.	SAP-Nr.	CAD-Nr.	Vers.	
Auftr.-Nr.	Änder. 06.12.16 jterfehr		2	442		707124	1	
STL-Nr.	Gepr.		Werkstoff			Nr.		
	Freig.		M 1:5	Abm.		Zul.Abw. ISO 2768-m		
		View Katherm QK nano W=165mm, H=070mm NP2000mm Katherm QK nano						Revision Angebot Bl.